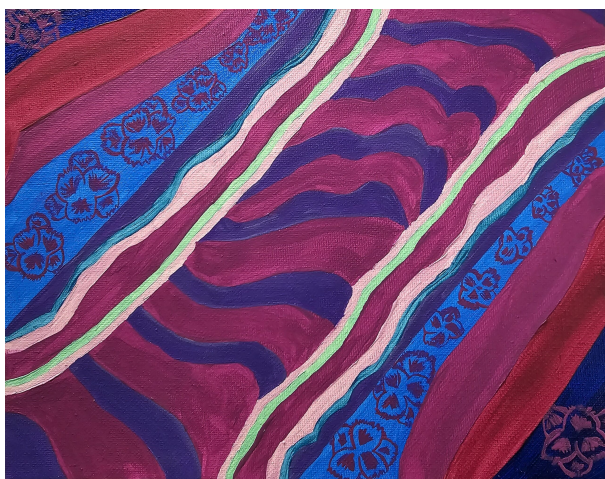


Purple Day Charity Art Auction 2025



Painting by Adele Ross

NOW IS THE TIME TO BID ON PURPLE DAY CHARITY ART AUCTION 2025

All proceeds from the auction go towards **Our Mission:** To improve the quality of lives of New Zealanders living with epilepsy.

In celebration of [Purple Day](#) 44 generous creatives have donated a purple art work to be auctioned on [TradeMe](#). The bidding is now [live](#). Please bid, share and enjoy the art. The [auction](#) closes on Purple Day 26th March 2025. Please ensure bids are placed before then to secure an original piece of art supporting a great cause.

Please view or download the catalogue here:

[Purple Day Charity Art Auction Catalogue 2025](#)

TAKING IN THE BEST VIEW, ANNA BAKER



0800 37 45 37



national@epilepsy.org.nz

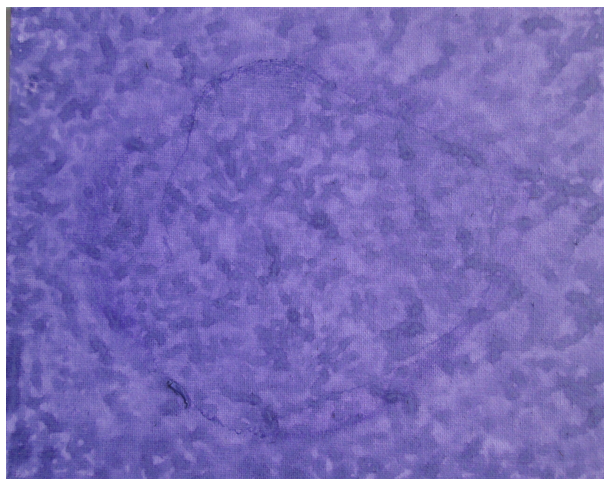


www.epilepsy.org.nz



My work life has included some years working as an educator with Epilepsy New Zealand. I wish to continue my support for those with epilepsy and hope my art work is worthy of some supportive bidders.

SING A RAINBOW SERIES #2: THE JIMI HENDRIX EXPERIENCE, DAVID NORTH



I like to make artworks that are “fun” this one references the mental “fog” after a seizure and also the Jimi Hendrix song “Purple Haze” which seemed quite appropriate.

ALWAYS BLOOMING, EMILY ROSE JOHNSON



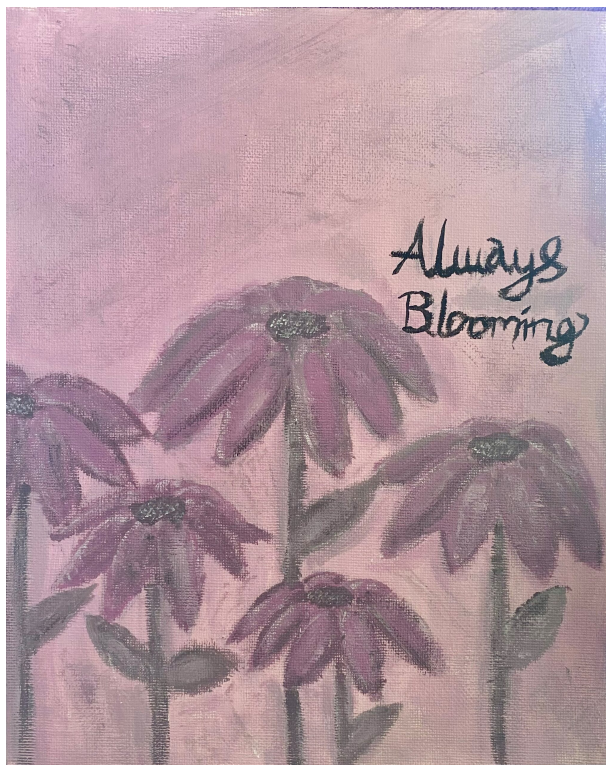
0800 37 45 37



national@epilepsy.org.nz



www.epilepsy.org.nz



This piece that I have created is to send a message to those with epilepsy that no matter what life has thrown at you, you will always stay standing strong.

BECKY MCKENZIE



Jolts and thunderbolts that represent seizures in the brain.

ANIKA BRICE



0800 37 45 37



national@epilepsy.org.nz



www.epilepsy.org.nz



Epilepsy seizures are out of our hands, but not this one.

ELLA DAVENPORT



Static to represent seizures and the electrical current.



0800 37 45 37



national@epilepsy.org.nz



www.epilepsy.org.nz

I WILL SING, MICHELLE NEALE



Michelle is an artist living in Bombay, Waikato, New Zealand. She is very inspired by nature, particularly flowers. She loves their form, colour, texture, and detail. Please visit Michelle's website for more info and artworks. Commissions welcome.

AGATA SMUZNIAK



0800 37 45 37



national@epilepsy.org.nz



www.epilepsy.org.nz



As an artist I create mostly abstract painting, which are based on multidimensional layers of nature and human mind.

IT'S A COW!", JOANNA GORDON



I am not much of an exhibitionist. I work mainly in collage and acrylics. And I love purple!

FOCUS FOR THE MIND, DONNA NORTH



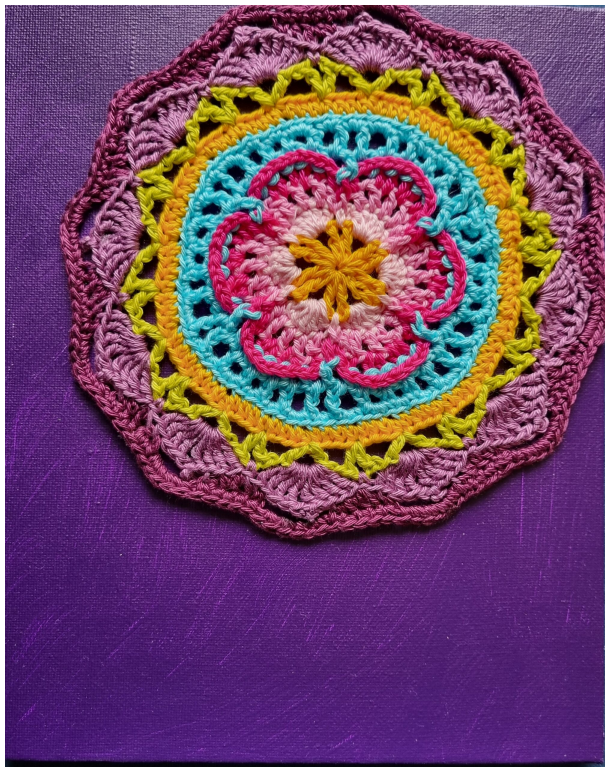
0800 37 45 37



national@epilepsy.org.nz

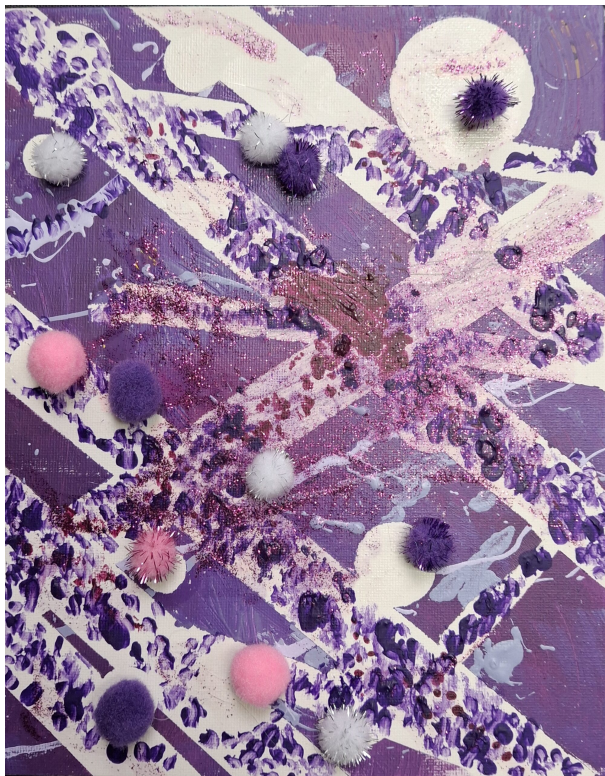


www.epilepsy.org.nz



Crochet with its repeating patterns and constant counting can be very calming to an over stimulated mind. Likewise the mandala may be employed for focusing attention.

CAROLINE EASTALL



I have used different materials and techniques to show how a seizure looks.



0800 37 45 37

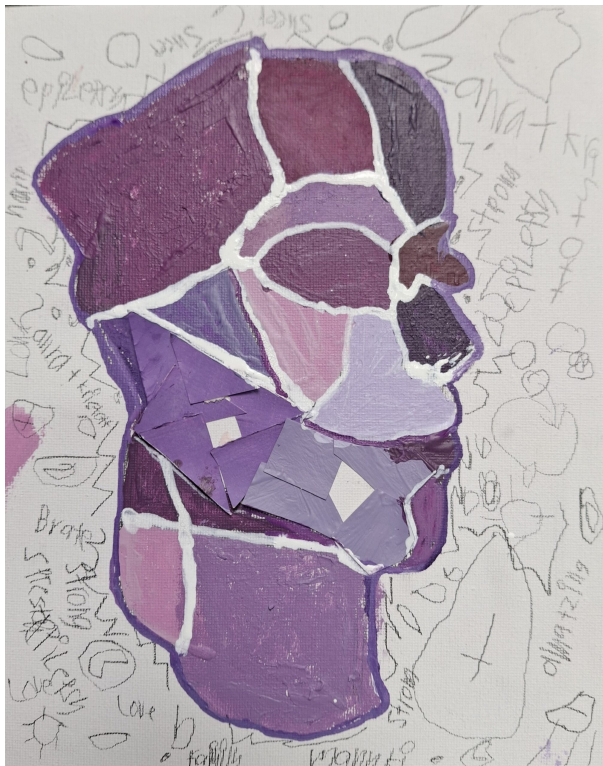


national@epilepsy.org.nz



www.epilepsy.org.nz

ZAHRA LYFORD



My art for epilepsy.

MOODY NIGHT, ANGELA STANFIELD



Angie.S. Handmade Designs – using handmade felt, textiles and natural fibres for fashion, decorative items & art.

PURPLE HUES, FRANKIE BAKER



0800 37 45 37



national@epilepsy.org.nz

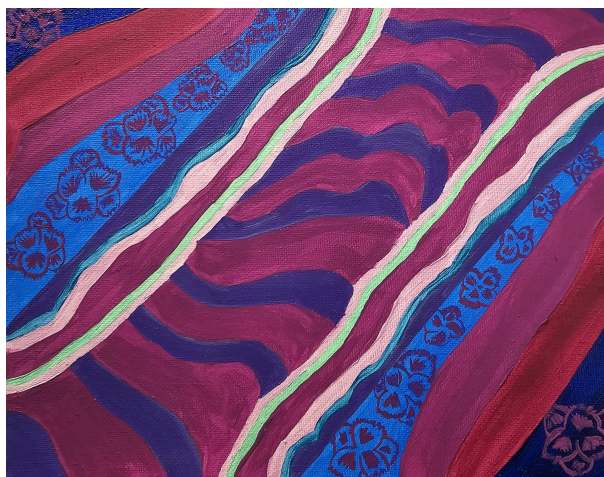


www.epilepsy.org.nz



Frankie Bakker is a painter living and working in New Zealand. Here came the bird's head representing this life without the chaos of idealism. Free to sing and dance when everyone is watching. Wallpaper is often her canvas quietly reminding us that there is always a history behind every move.

KEEPING YOUR POSITIVITY AND VIBRANCE FLOWING, ADELE ROSS



I am driven to create awareness towards Epilepsy through my artwork. Being free from Epilepsy for the past 10 years, I plan to fundraise and start giving back to people that need.

JEREMY GODDARD



0800 37 45 37



national@epilepsy.org.nz



www.epilepsy.org.nz



Epilepsy in art form.

PARTH MEHTA



I used cut-up pieces of cardboard with different shades of purple and specs of other colours to show the movement of epilepsy.

THOUGHTS INTERRUPTED, LAUREL STEPHENS



0800 37 45 37



national@epilepsy.org.nz



www.epilepsy.org.nz



I am an amateur who enjoys playing with colour. I typically begin with paint and when I muck things up, add pastel or pencil and call it 'mixed media'!

WAHINE IN MEDITATION, TRACEY LAIRD



Wahine In Meditation – left side calm / clear (front area of brain). Right side high activity/chaos (back area of brain). Meditation helping to calm/balance vagus nerve running down centre, with clear quartz crystals.

ANTON KEMP



0800 37 45 37



national@epilepsy.org.nz



www.epilepsy.org.nz



I want to show what a seizure looks like. With the use of materials and paint.

CHRISTIAN JEPSSEN



I have used string to make a face. The swipe of paints shows the movement of seizures.

SOFIA SIDORUK



0800 37 45 37



national@epilepsy.org.nz



www.epilepsy.org.nz



Light blub breaking is like a seizure happening. The splattered paint is like electricity going everywhere like a seizure.

BEN KAI FONG



This is my interpretation of what epilepsy looks like to me. In form of a pyramid and different designs.

ENRICO MONTECLARO



0800 37 45 37



national@epilepsy.org.nz

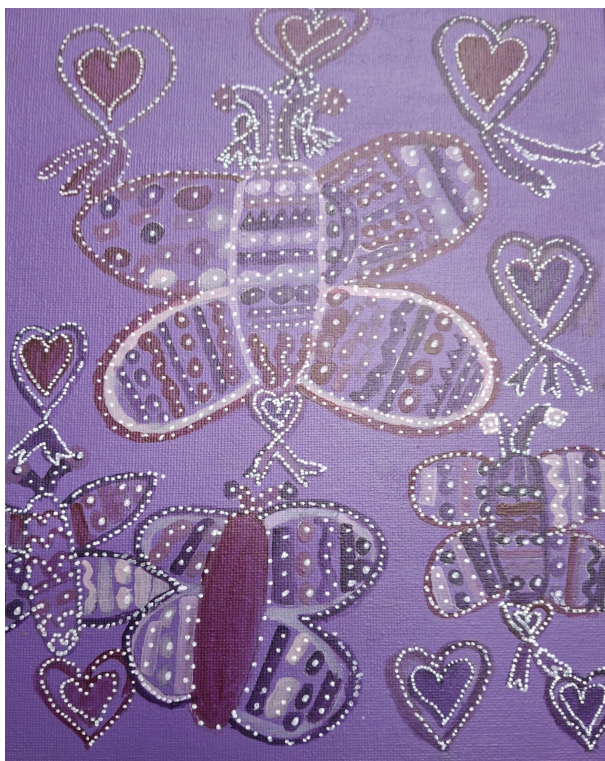


www.epilepsy.org.nz



This light bulb represents a part of the brain. The splatter and broken part of the bulb showcases the frustration that happens when a seizure takes place.

EMILY SIMPSON



Butterflies for a soft touch, and love hearts for those who have epilepsy.



0800 37 45 37



national@epilepsy.org.nz



www.epilepsy.org.nz

MY BEST FRIEND, DIANA NG LOW



When you're lonely or lost because of Epilepsy, having a faithful doggy friend can help brighten your day. Dogs don't judge you.

ISAAC NAM



My art for Epilepsy.

LACEY COLLIER



0800 37 45 37



national@epilepsy.org.nz



www.epilepsy.org.nz



Seizures affecting the brain – fractured and disjointed puzzle pieces.

KAREN CABEZAS



Epilepsy Ribbon with bobbles representing the brain.

NICK JANKE



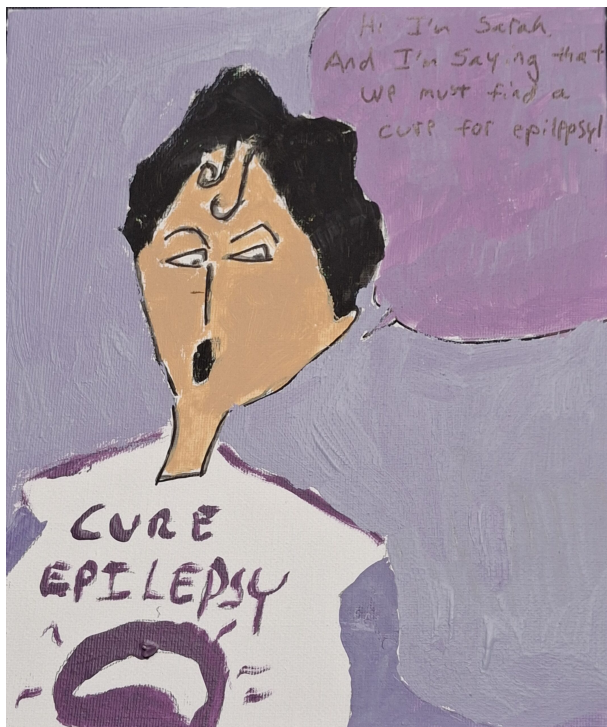
0800 37 45 37



national@epilepsy.org.nz



www.epilepsy.org.nz



A cure epilepsy campaigner, wearing her t-shirt.

ELYZAH WARDA



Love hearts for epilepsy, because people with epilepsy need lots of love.

PHILIP RITCHIE



0800 37 45 37



national@epilepsy.org.nz



www.epilepsy.org.nz



Epilepsy ribbon with love hearts.

TASMYN GRINDLAY



The brain having a seizure, scattered colours and zig zags.

LAURA MONTGOMERY



0800 37 45 37



national@epilepsy.org.nz



www.epilepsy.org.nz



Teddy Bear for epilepsy, for children to hug.

HOPE MCDERMOTT



Two people having a seizure – with their hearts and brains affected by the zig-zag seizures. No two seizures are the same.



0800 37 45 37



national@epilepsy.org.nz



www.epilepsy.org.nz

ZAK LAING



Seizures and man with a fuzzy brain. The effects of seizures that can happen in the background.

JENNA MAGUREN



My piece helps create awareness about epilepsy using string and paint to show confusion.



0800 37 45 37



national@epilepsy.org.nz



www.epilepsy.org.nz

TONY ODY



I have created my epilepsy piece, using glittery paint and techniques to show the movement of a seizure.

LOUISA KELLY



Abstract reflection of Epilepsy.

TOM JENKINS



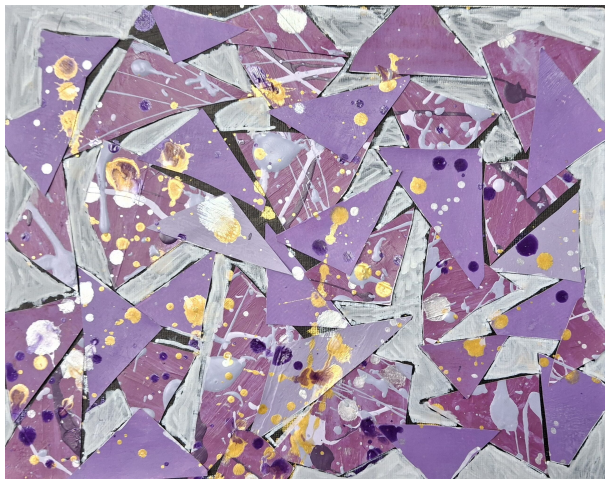
0800 37 45 37



national@epilepsy.org.nz



www.epilepsy.org.nz



I used many kinds of purple paint and specs of other colours. I put them together making a puzzle with cracks. This is my take on epilepsy.

SARAH MICHAEL



Wouldn't it be great if we could put a plaster on the brain to fix epilepsy?

RAQUIEL TE KAWA



Epilepsy butterfly with ribbons, helping to lift and take away epilepsy.



0800 37 45 37

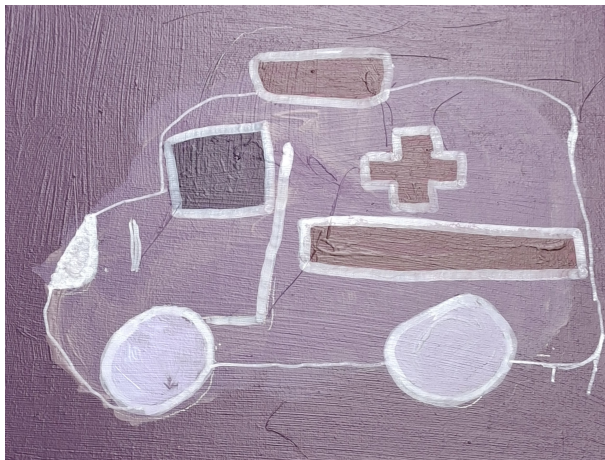


national@epilepsy.org.nz



www.epilepsy.org.nz

LEWIS TAITO MATAMUA



Wouldn't it be great if there were ambulances just for epilepsy. Here's my idea!

JANIECE POLLOCK



Epilepsy Ribbon with love hearts, with a fade effect on the love hearts.



0800 37 45 37



national@epilepsy.org.nz



www.epilepsy.org.nz