



**EPILEPSY
NEW ZEALAND**

Kia titiro ki te tangata / See the person
Celebrating 70 Years and Beyond

PURPLE DAY

A GUIDE FOR SCHOOLS

PURPLE DAY / 26 MARCH

<https://epilepsy.org.nz/you-can-help/please-support-our-current-appeal/purple-day/>



PURPLE DAY



CONTENTS

1. Let's Talk: Purple Day
2. Wear Purple
3. Colour Run Purple
4. Craft Purple
5. Colour Purple
6. Dance Purple
7. Move Purple
8. Bake Purple
9. Collect Donation Purple
10. Shout Purple
11. Checklist

PURPLE DAY / 26 MARCH

<https://epilepsy.org.nz/you-can-help/please-support-our-current-appeal/purple-day/>



**EPILEPSY
NEW ZEALAND**
Kia titiro ki te tangata | See the person

PURPLE DAY



LET'S TALK! PURPLE

Let's raise funds and get people talking about epilepsy!

Purple Day is celebrated on **26 March** every year. On Purple Day people unite to raise awareness and fundraise for support services for people living with epilepsy.

There are so many ways your school can participate in Purple Day. This pack provides some ideas to get your planning underway and make your fundraising activity a great success.

If 26 March doesn't fall on a day of the week that suits you - **choose any date during the month of March!**

Over the next few pages, we share some of our fundraising ideas. On the last page is a checklist to help you organise Purple Day.

Once you have decided what you are going to do, either fill out the online registration form on our website <https://epilepsy.org.nz/you-can-help/please-support-our-current-appeal/purple-day/>, or complete and email the pdf registration form on the website to marketing@epilepsy.org.nz and we will send you some materials to **GO PURPLE** closer to the date!

By taking part, your school joins thousands of others across Aotearoa who are helping create a more understanding, inclusive world for people with epilepsy.



PURPLE DAY / 26 MARCH
marketing@epilepsy.org.nz



**EPILEPSY
NEW ZEALAND**
Kia titiro ki te tangata | See the person

PURPLE DAY



WEAR PURPLE

‘Wear purple’ dress up or non-uniform days.

A perfect way for schools to support Purple Day.

Ask everyone who participates to bring a gold coin donation for coming to school wearing something purple.

You could also set up a fundraising stall at the gate, display balloons and advertise the event in your school newsletter.



PURPLE DAY / 26 MARCH
marketing@epilepsy.org.nz



**EPILEPSY
NEW ZEALAND**
Kia titiro ki te tangata | See the person

PURPLE DAY



COLOUR RUN PURPLE

‘Colour Run purple’ at your school.

Order purple pigment and throw it in the air in a Purple Day colour run.

Advertise your fundraiser on the school Facebook page.
Ask families to promote Purple Day fundraising on their family Facebook page.

Shout about Purple Day and collect the donations from your online community.

Epilepsy New Zealand Facebook Page:
<https://www.facebook.com/epilepsynz/>



PURPLE DAY / 26 MARCH
marketing@epilepsy.org.nz



**EPILEPSY
NEW ZEALAND**
Kia titiro ki te tangata | See the person

PURPLE DAY



CRAFT PURPLE

‘Craft purple’ at your school.

Plan for Craft Purple Day by cutting out shapes and learning about anatomy, health and diversity and inclusion.

Get the scissors out and get crafty! Purple Day is a great day for purple crafts, learn about the brain, neurology and get people talking about epilepsy.

1. Learn about science and the human body
2. Learn about compassion, diversity and inclusion and respect for others.



PURPLE DAY / 26 MARCH
marketing@epilepsy.org.nz



**EPILEPSY
NEW ZEALAND**
Kia titiro ki te tangata | See the person

PURPLE DAY



COLOUR PURPLE

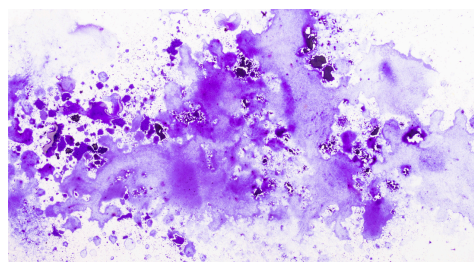


‘Color purple’ at your school.

Plan for Colour Purple Day by organising a Purple Day class room colouring activity.

Get the purple paint ready and let the tamariki paint, spray, color, splash or colour in.

If your class enjoys colouring in, Epilepsy New Zealand have colouring in print outs available, Neut the Neuron and friends. Please request the resources when you register.



PURPLE DAY / 26 MARCH
marketing@epilepsy.org.nz



**EPILEPSY
NEW ZEALAND**
Kia titiro ki te tangata | See the person

PURPLE DAY



DANCE PURPLE

‘Dance purple’ at your school.

Plan for Purple Day dance. Set up purple lights in your school hall or play some music and dance with purple balloons.

Get tamariki moving - plan a dance in your classroom, sports field or assembly.

If your school has a ‘wear purple’ day all the better to have fun, move and raise epilepsy awareness.



PURPLE DAY / 26 MARCH
marketing@epilepsy.org.nz



**EPILEPSY
NEW ZEALAND**
Kia titiro ki te tangata | See the person

PURPLE DAY



MOVE PURPLE

‘Move purple’ at your school.

Plan for Purple Day yoga, stretching, jumping, running.

Get tamariki moving. Plan a fun run, do yoga or action songs.

Learn to calm the mind and promote health and wellbeing and awareness of others.

If your school has a ‘wear purple’ day all the better to have fun, move and raise epilepsy awareness.



PURPLE DAY / 26 MARCH
marketing@epilepsy.org.nz



**EPILEPSY
NEW ZEALAND**
Kia titiro ki te tangata | See the person

PURPLE DAY



BAKE PURPLE

‘Bake purple’ hold a bake day sale at your school.

Ask for donations of baking to sell or make your own with the tamariki. Cakes and baking can be sold for \$1, \$2 or \$5. Every cake sold will help our educators transform the lives of people living with epilepsy by providing them with support and education.

Don't forget event posters! Have tamariki make their own or print one of ours to let everyone know about your Purple Day event!



PURPLE DAY / 26 MARCH
marketing@epilepsy.org.nz



**EPILEPSY
NEW ZEALAND**
Kia titiro ki te tangata | See the person

PURPLE DAY



COLLECT PURPLE

‘Collect purple’ at your school.

Chat about epilepsy awareness. Let’s talk about supporting our friends when they have a seizure.

Let’s respect peoples' differences and live a healthy life free of discrimination.

Get your school community together and fundraise for Epilepsy New Zealand. Tamariki can learn to relate to others and practice participation and contribution.

Purple Day is a great day to come together and practice fundraising! No matter how small every donation helps someone living with Epilepsy. All donations go directly to funding our 13 nationwide educators to provide support and education.

After your Purple Day donate your funds to Epilepsy New Zealand’s Purple Day Donation Page:

<https://epilepsy.org.nz/you-can-help/please-support-our-current-appeal/donate-for-purple-day/>

*Epilepsy New Zealand
Registered Charity Number CC10611*



PURPLE DAY / 26 MARCH
marketing@epilepsy.org.nz



**EPILEPSY
NEW ZEALAND**
Kia titiro ki te tangata | See the person

PURPLE DAY



SHOUT PURPLE

Shout about your Purple Day fundraiser

Raise Awareness: Let your community know about your fundraising day! The more people who know about your Purple Day fundraiser, the more support you will receive.

Sharing event details and fundraising pages on social media is a great place to start. Don't forget to use social media groups, family Facebook pages, company newsletters, notice boards and flyers to ask for support.

Get people talking about epilepsy

Purple Day is about raising funds for our epilepsy support services and raising awareness of epilepsy. Sharing and talking about epilepsy may help increase understanding and encourage diversity and inclusion.

Together we can get people talking about epilepsy.

LET'S GO PURPLE DAY!



PURPLE DAY / 26 MARCH
marketing@epilepsy.org.nz



**EPILEPSY
NEW ZEALAND**
Kia titiro ki te tangata | See the person

PURPLE DAY



CHECKLIST

- Decide what activities you are going to do for Purple Day
- Register to fundraise by either filling out the online registration form on our website <https://epilepsy.org.nz/you-can-help/please-support-our-current-appeal/purple-day/>, or complete and email the pdf registration form on the website to marketing@epilepsy.org.nz
- Mark Purple Day event, **26 March** in your calendar and decide on a time
- Plan a School Facebook Post or newsletter notification
- Tell everyone about your Purple Day fundraising activity - share on social media, posters, invites, emails, groups
- Get ready with your materials from ENZ and your own consumables - posters, cakes, paint, color
- Take photos of your fundraising activity and share it with everyone (including us! projectsupport@epilepsy.org.nz)
- Collect cash donations
- Donate your collected funds to Epilepsy New Zealand so your purple dollars start transforming lives and make an impact with education and support services

Epilepsy New Zealand Purple Day Donation Page:

<https://epilepsy.org.nz/you-can-help/please-support-our-current-appeal/donate-for-purple-day/>

For Information contact Epilepsy New Zealand:

marketing@epilepsy.org.nz | Ph: 0800 37 45 37 | (07) 834 3556

Epilepsy House, 6 Vialou Street, Hamilton Central, Hamilton 3204

LET'S GO PURPLE DAY!

THANK YOU FROM EPILEPSY NEW ZEALAND