

Artwork Resene Paint on 8x10" Canvas

Title and Artist Name

Artist notes



Dance Like No One is Watching,
Selene Simcox

Remember to dance and feel the energy of life. Paint has its own energy too. It all reminds you to keep dancing like no one is watching.



Spiritual Inspiration, Franzeska
Pound

Wellingtons south coast, a walk I do often and where I find a lot of my inspiration.



Missing Clock, Brent Milburn

I have chosen clock pieces to show epilepsy in action. A clock piece falling off shows a seizure taking place. This shows the impact of a seizure on the brain.



Confused, Carlo McIlvride

In my abstract piece, I have painted different shades of purple on the shattered glass pattern. This shows a seizure in motion.



Doodling, Tim Wightman

I love Chequers and Doodling so put them together for Purple Day



Missing words, Caroline Eastall

I have used printed words fading in my abstract piece to show the effects of epilepsy.



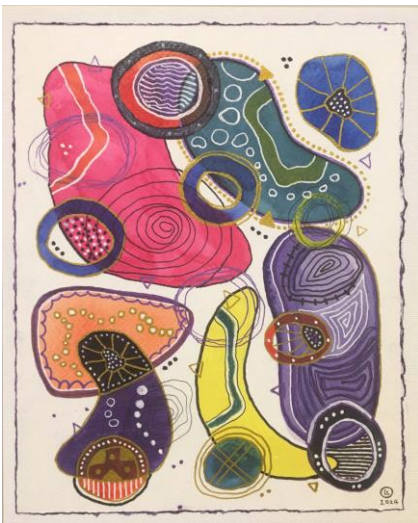
Part of the brain, Enrico Monteclaro

I'm very happy in taking part creating awareness for epilepsy through my art. The jigsaw pieces as the brain, then breaking apart shows a seizure taking place in the brain.



Pathways, Karen Cabezas

I have created my art piece using abstract art to create an awareness around epilepsy.

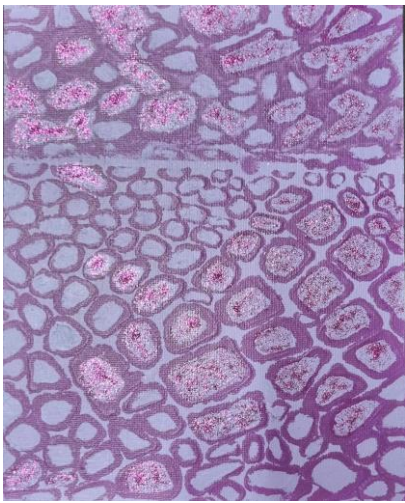


Brain Burps & Blips, Laurel Stephens



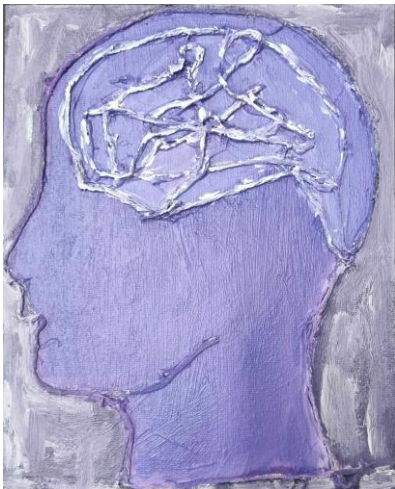
Ruby the Jellyfish, Frida

I like jellyfish because they are cool and pretty



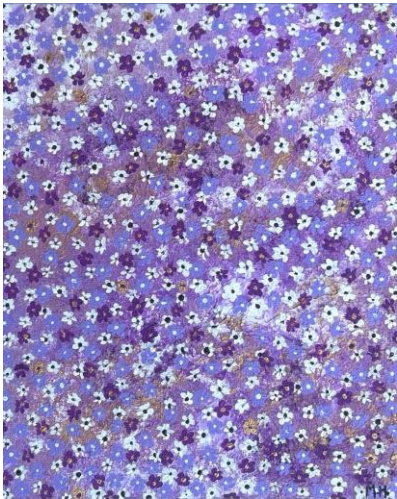
Scatter, Lisa Kiernan

I have painted a pattern which looks like brain cells moving in the brain. The sparkles separating from some of the cells shows the start of epilepsy taking place.



String, Luke Wright

I have used string to outline a person's head and brain. The string jumbled up represents when a terrible seizure takes place in the brain.



Fiore Viola, Melissa Hicks

This is an important cause to me as my 6 year old has epilepsy and I would love to raise some money and awareness



Don't let it get you, Meta Assink

I paint whimsical animals as a reminder that moments of reflection, playfulness, and humor can be created - even on some very challenging days.



Fading, Naliyah Te-Maki

A cause close to my heart. I have used a fading technique with the head, to show the confusion going on in the brain when a seizure is happening.



Brain cells during epilepsy,
Nicholas Johnson

An awesome cause to contribute to. In my art piece, the wooden cubes represent brain cells. Healthy brain cells are joined together, but with epilepsy cells come apart due to a seizure.



Groove vibes, Cecily Conley

I choose purple and green because together they dance, showing the elasticity of colours and shapes, like a fiesta in a canvas!



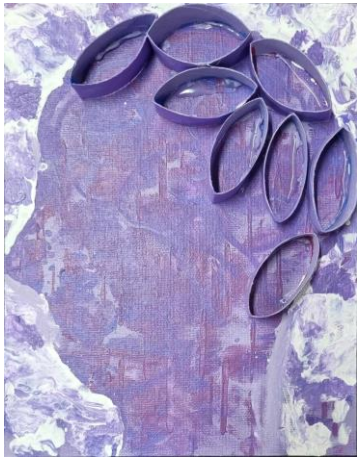
Lost, Paul Leydon

Through my art I have used blocks to show the movement of how a seizure takes place in the brain.



World of synapses, Agata Hubbard

As an artist I create mostly abstract paintings, which are based on multidimensional layers of nature and human mind



Motion, Raquiel Te Kawa

I have created my epilepsy art piece using different techniques to show a seizure at hand. I have used paint blowing and added layers of paper rolls to emphasise a seizure taking place.



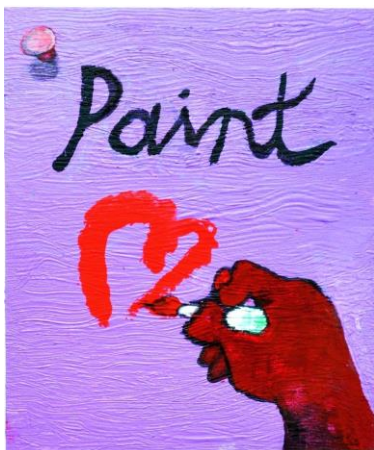
Detached, Scott Van de Reit

I have created my piece to showcase the chain of thought being broken when a seizure takes place in the brain.



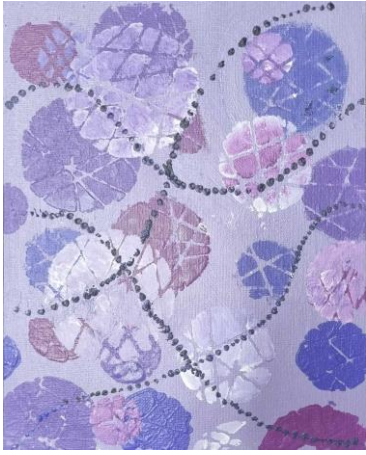
The track, Sofia Sidoruk

In my art piece, I have painted different triangular shapes purple. Throughout my painting there are sparkles surrounding the triangles. In some spaces sparkles come off track representing when epilepsy is present.



Valentine's on Velvet Wood, Diana Ng Low

In the past I've worked as a creative director, working with graphic designers in the advertising industry. I'm also an illustrator who has published a comic booklet for a Training Course. Generally, I like including creative concepts in my art. This is a simple one. As shown, I've created a wooden background. Painted in purple!



Circle dots, Tatiana Vairera

Supporting the cause means a lot, as it creates awareness around epilepsy. I have used circles as the cells, the dark ones represent normal cells and the lighter circles represent the epilepsy present in the brain.

Epilepsy New Zealand (registered charity no.10611) are proud to present Purple Day Charity Art Auction. Artists have generously donated a purple painting in celebration of Purple Day. Purple Day held on 26th March is international epilepsy awareness day. Thank you to our supporters. Please bid, like and share with your networks. #EpilepsyNZ

