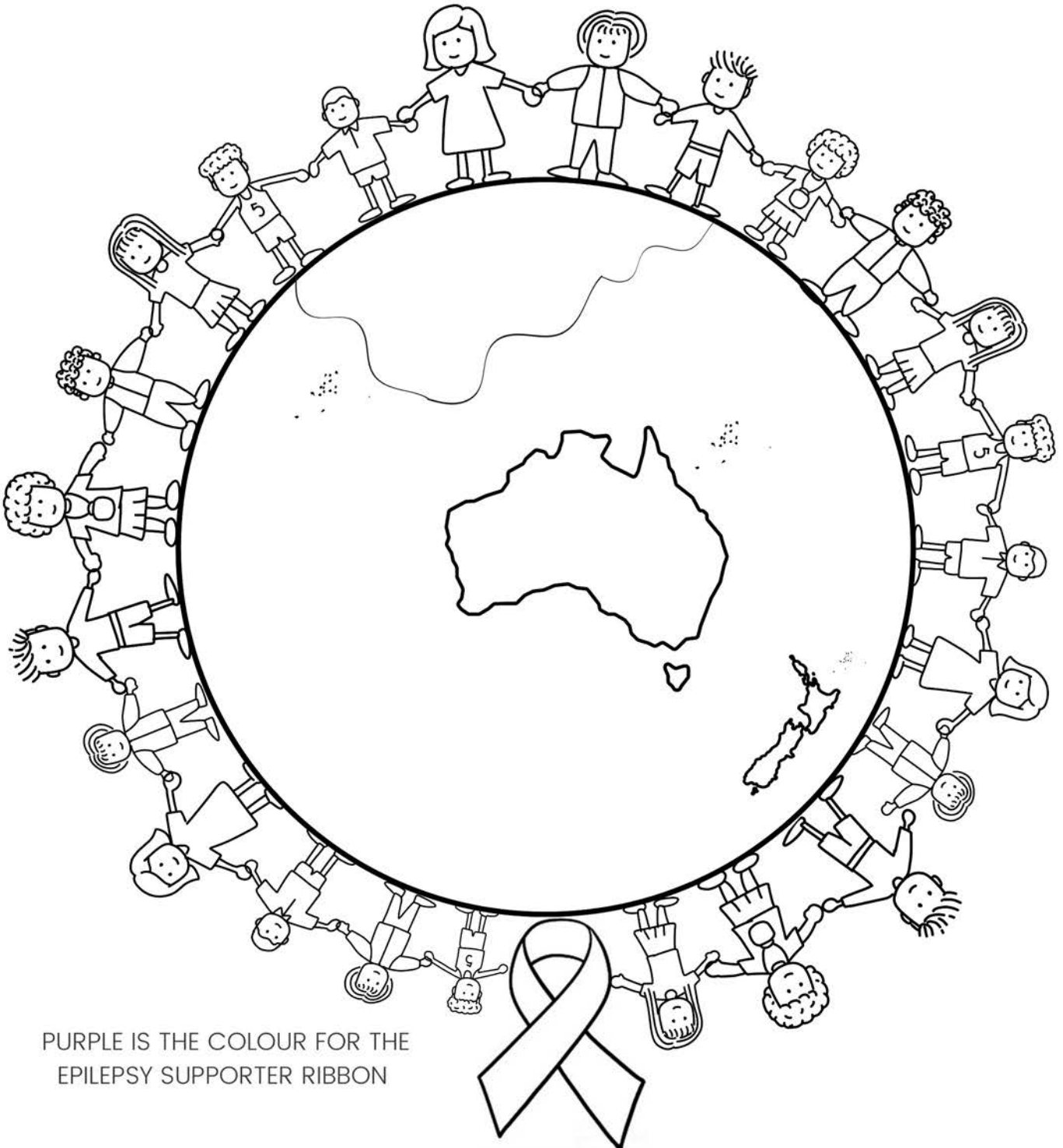


SUPPORTING THOSE WITH EPILEPSY

**Did you know people all over the world have epilepsy?
Some of these people may be old and some may be young.
Some may be boys some may be girls.**

Colour in the picture below



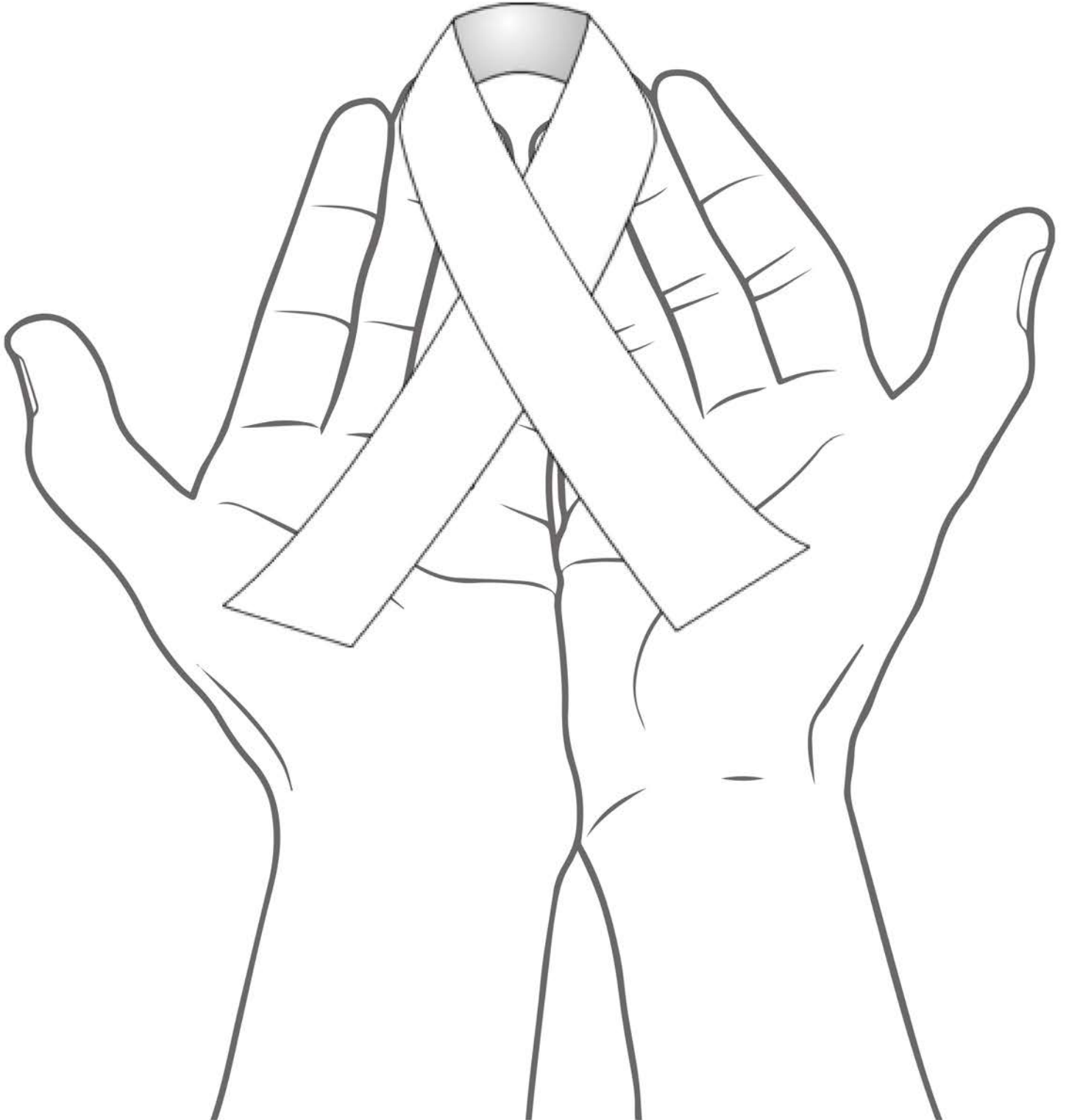
PURPLE IS THE COLOUR FOR THE
EPILEPSY SUPPORTER RIBBON

www.epilepsy.org.nz

SUPPORTING THOSE WITH EPILEPSY

Colour in the picture

Purple is the colour for the Epilepsy Supporter Ribbon



EPILEPSY HERO

Finish off the Epilepsy Hero and colour it in



Name _____



EPILEPSY SEARCH

Circle the hidden words in the puzzle below.
Look up, down, across and backwards.



brain

medicine

seizure

neuron

ASM

epilepsy

pill

doctor

ASM is short for Anti-Seizure Medication

safety



EPILEPSY SEARCH

Circle the hidden words in the puzzle below.
Look up, down, across and backwards.

E	Q	S	A	F	E	T	Y	P
P	N	L	R	O	T	C	O	D
I	E	R	N	H	P	S	M	E
L	U	E	R	U	Z	I	E	S
E	T	N	E	U	R	O	N	C
P	Z	P	P	I	L	L	T	U
S	N	U	N	S	R	A	S	M
Y	M	E	D	I	C	I	N	E
M	B	R	A	I	N	E	R	W

brain

medicine

seizure

neuron

ASM

epilepsy

pill

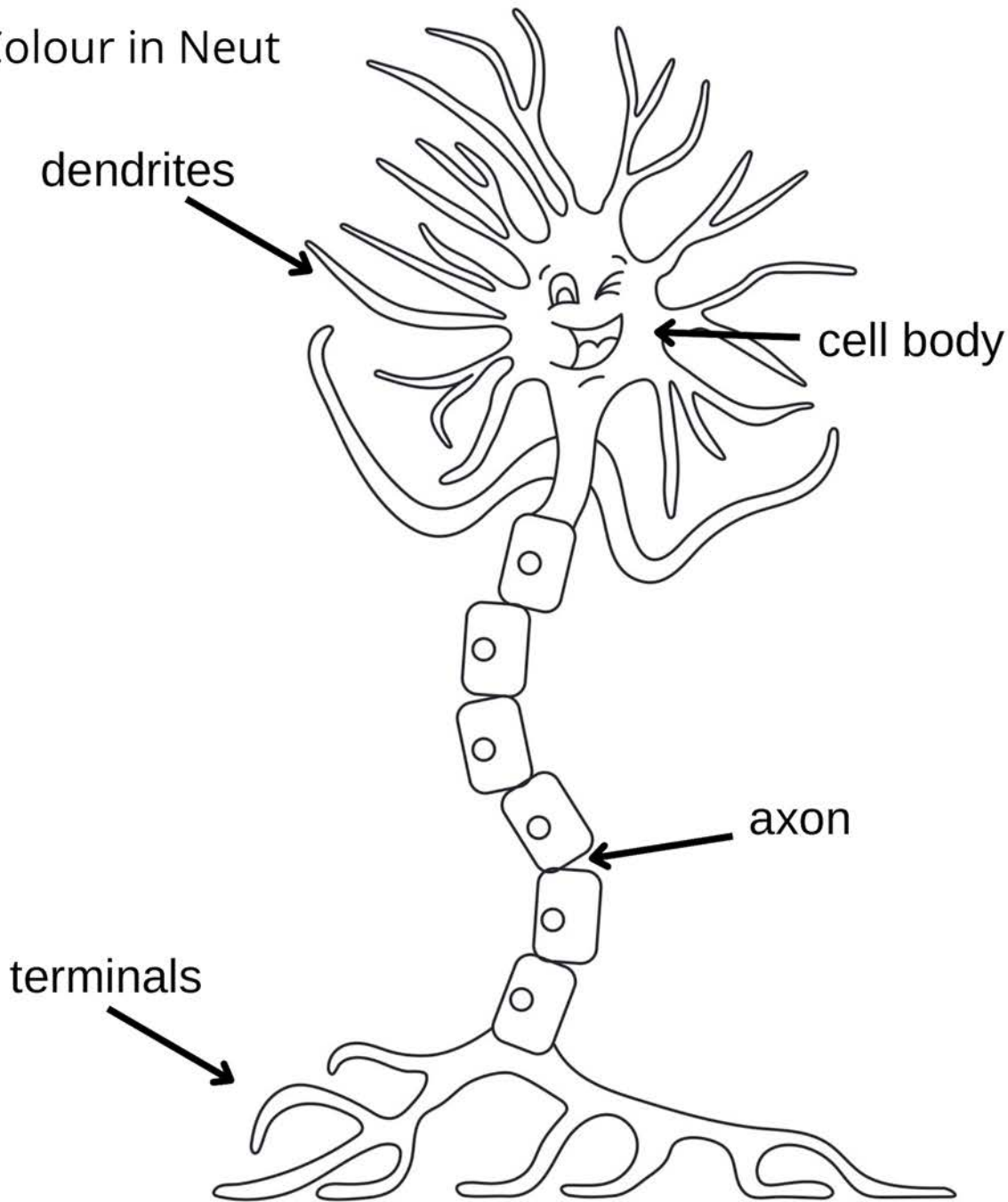
doctor

safety

ASM is short for Anti-Seizure Medication

MEET NEUT THE NEURON

Colour in Neut



Neuron Facts

- Neurons are nerve cells which are an important part of our nervous system
- The average number of neurons in the human brain is about 100 billion
- Neurons don't use words to share their messages; instead, they use chemicals and electrical signals
- For people with epilepsy the neurons can misfire, which results in brain messages getting muddled and a seizure may begin